

MOJO  
HOMES

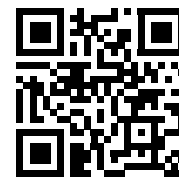
# Housing World Shoalhaven

Essence 24 | Newport 28 One

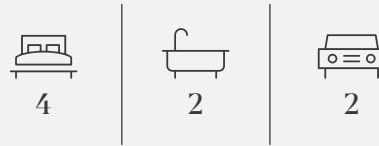
---

# Essence 24

MONTAUK FACADE

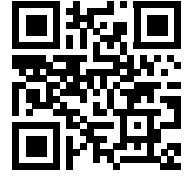


Width 11.39m  
 Length 20.04m  
 Total Area 230.67m<sup>2</sup>  
 Squares 24

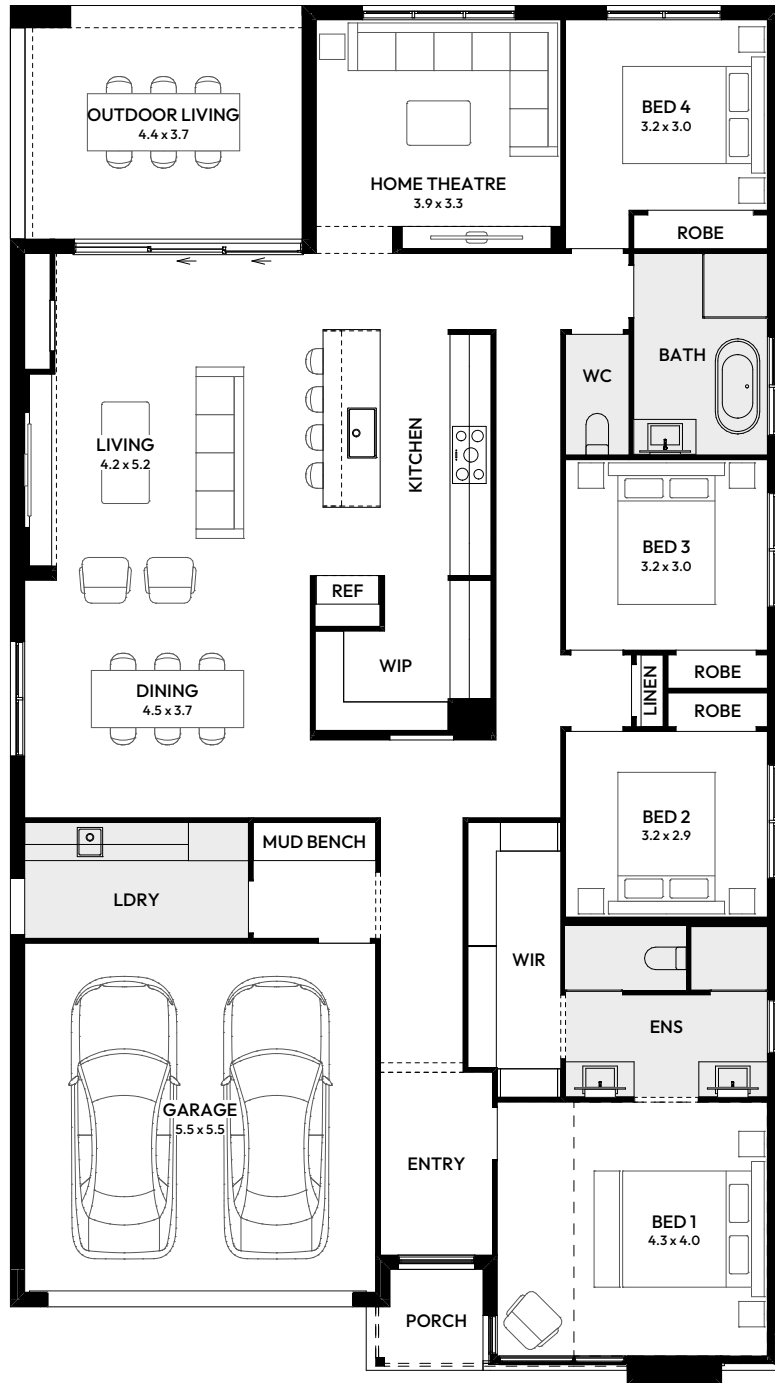


# Newport 28 One

SEACLIFF FACADE



Width 12.15m  
 Length 21.50m  
 Total Area 255.62m<sup>2</sup>  
 Squares 28





## Housing World Shoalhaven

95 Wirraway Boulevard, Badagarang NSW 2540

---

### CALL US TODAY

1300 006 656

### EMAIL US

[enquiries@mojohomes.com.au](mailto:enquiries@mojohomes.com.au)

### VISIT WEBSITE FOR MORE

[mojohomes.com.au](http://mojohomes.com.au)

---

IMPORTANT NOTICE: Images in this brochure (including photographs, floor plans and artist impressions) may depict floor plan options, finishes and fittings not included as standard and/or supplied by Mojo Homes including but not limited to furnishings, window coverings, landscaping, water features, barbecues, pergolas and swimming pools. The Essence 24 floor plan is based on the Montauk facade. The Newport 28 ONE floor plan is based on the Seacliff facade. All measurements are approximate only. Facade images are to be used as a guide only and may show decorative or upgrade items NOT included in the base price or supplied by Mojo Homes including but not limited to applied finishes, timber windows, feature front entry door, external lights, upgraded garage door and roof coverings. Mojo Homes reserves the right to change floor plans, prices, specifications, materials and suppliers without notice. All rights reserved. Changed items may vary slightly in colour, style and finish to the original selection or as displayed. Please speak to a Mojo Homes New Home Consultant for house specific drawings to assist you in making your choice. All plans and facades are protected by copyright and are owned by Mojo Homes Pty Ltd. ABN 31 166 754 696. Builders Licence Number 269829C. Edition 1. April 2026.